



Parish Profile | St Margaret's Church, Ipswich

St Margaret's Church

Contents

Profile Summary1

1. St Margaret's Church

Who we are2

Our Worship and Music.....3

Mission5

Our Leadership Team.....6

2. St Margaret's C of E Primary School7

3. St Margaret's Parish

What our Parish is like8

4. Buildings and Finance

Church Building10

Church Centre and its users11

The Vicarage13

Our Finances.....14

5. Who we seek to come alongside us

Where we feel God is leading us15

Qualities we are looking for16

What we can offer you17

6. Diocese and Deanery

Diocese18

Inspiring Ipswich.....21



Profile Summary



“So Christ himself gave the apostles, the evangelists, the pastors and teachers, to equip his people for works of service, so that the body of Christ may be built up.”

Ephesians 4:11-12

Welcome to our Parish Profile. We hope to take you along with us on the journey we're on in discerning God's purposes for the future of His church of St. Margaret's Ipswich.

Who are we?

We are a warm, welcoming 'open evangelical' church, located close to the centre of Suffolk's County town of Ipswich and adjacent to its impressive Christchurch Park. We have an electoral roll membership of 139 and are closely linked with a Church of England Voluntary Aided primary (CEVAP) school, situated next to the church.

Where are we now?

Following a period of declining numbers (partly due to Covid), we're sensing a wake-up call from God. Our parish includes both high and low-income households and a wonderful mission opportunity exists by way of the 'Ipswich Garden Suburb', a huge new housing development, part of which lies in our parish.

What's next?

We are looking for encouragement, teaching, guidance and leadership to respond to God's call.

What are our greatest challenges?

We seek to rediscover the call of Christ to make meaningful connections with people within and outside our church community - especially youth and young families - and to make new disciples.



What are we looking for in a new minister?

We seek someone with a strong personal, spirit-filled, prayer-centred, infectious faith, who will be an equipper, enabler and encourager, committed to shared ministry. We value our corporate worship across a range of styles and look for someone to support this.

What will we offer our new minister?

At a practical level, there is a 4 bedroomed detached vicarage. We have a Licensed Evangelist within the church family, employ a part-time Verger/Administrator and our finances are relatively robust. **Most importantly,** we will walk alongside you on this journey, praying for you, encouraging you and supporting you.

Where are we visible online?

[St Margaret's Church, Ipswich](http://stmargaretsipswich.org.uk) stmargaretsipswich.org.uk

[A Church Near You](#)

[Facebook](https://facebook.com/StMargaretsIpswich) facebook.com/StMargaretsIpswich

St Margaret's Church



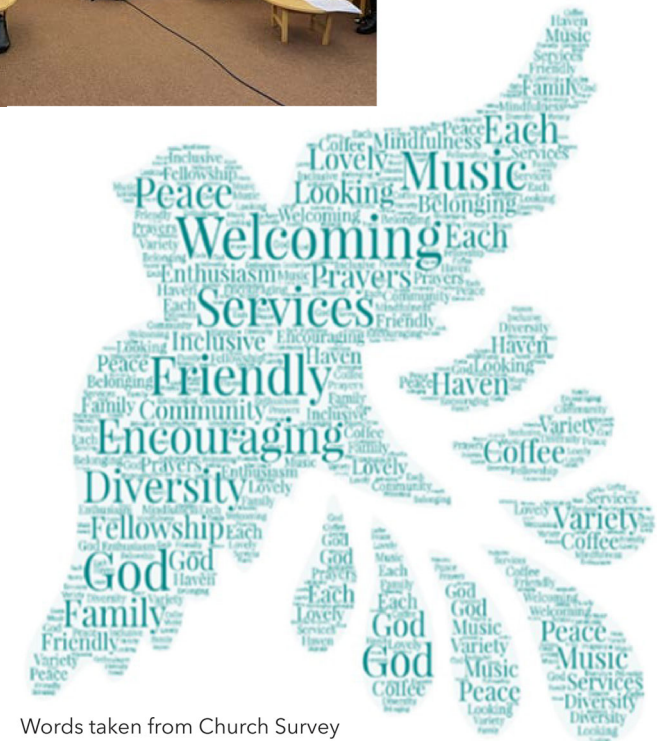
Who we are

St Margaret's Ipswich is a church that's founded on an 'open evangelical' perspective. Our patrons are the Simeon's Trustees (www.simeons.org.uk). We are seen as a friendly, welcoming church where we look out for each other and people say they feel at home in our church.

We enjoy a variety of services with a much-loved and wide-ranging musical tradition and value this diversity alongside the sense of family in our church.

Many value the peace of God in our Grade 1 listed building and gain strength from the space for private prayer and contemplation. We are saddened that, over the last few years, we have seen a decline in church attendance (not just due to Covid) but people are coming back and there is a new sense of enthusiasm and energy which has great potential. We are eager to see our church grow both spiritually and in numbers and are looking to appoint a priest in charge to help us achieve this.

We feel it is time to deepen our corporate prayer life, to re-evaluate, re-energize and refresh St Margaret's and to visit afresh how we relate to our church community, our school community and the outside community. We are praying every week in a dedicated session as we seek to discern God's will for His church of St Margaret's Ipswich and wish to appoint someone who will accompany and lead us on that journey.



Our worship and music

St. Margaret's enjoys a variety of services and worship styles that help people come closer to God in a way that is most meaningful to them. We do observe liturgical seasons and our tradition is for the presiding minister to robe for sacramental services (cassock; alb) and choral services.

Our church music, which is a key aspect of our services, spans the centuries and embraces both traditional and more contemporary forms of musical worship. We also have a loyal band of bellringers who ring for one service each week, as well as helping to support/train ringers from other churches.

We have three services each Sunday morning. Following the COVID lockdowns, attendance has risen to about 80 people attending across the morning.

During the Covid pandemic our monthly, mid-week Communion visits to the housebound and residential homes had to cease and it would be good to be able to resume this service as soon at the earliest opportunity.



Our current pattern of services:

8am Holy Communion using the Book of Common Prayer

A said service with a short sermon; attended by a relatively small congregation who value the chance to connect to their faith through more traditional language. (Approx. 10 worshippers)

9.30am "Rise and Shine" all-age service

A truly intergenerational, short, relaxed and lively service without formal liturgy, including a short talk, a (usually) craft-based activity that caters for all ages, and worship songs supported by a music group. Once a month April to September (weather-permitting) this is run as a "Green Church" service, which is held in the churchyard and focuses on creation and the natural world. In the winter months we swap this to Café Church in the Church Centre. Also, once a month, we include communion in the service. (Approx. 30 worshippers)

11am Parish Communion

Using the standard Common Worship liturgy, with a 10 minute sermon, this service has a relaxed atmosphere, but with some formal elements. It is usually supported by the organ and a robed choir, and traditional hymns are sung. (Approx. 40 worshippers)

Once a month we hold a more informal Service of the Word at 11am, with songs supported by a small band consisting of piano and orchestral instruments.

On a fifth Sunday in the month, we have a sung BCP Morning Prayer service, with the choir.



In addition to these Sunday morning services

- One Sunday a month we provide a traditional Choral Evensong service at 6.30pm
- Prior to the vacancy we held a short, said Evening Prayer service in church each Wednesday evening. (During the vacancy this has been replaced by a prayer meeting focussing on the appointment of a new incumbent)

Traditional Festivals of the church's year such as Mothering Sunday, Harvest, Advent, Christmas and Easter are celebrated with thanksgiving, contemplation and joy at St Margaret's. We provide a range of services from Good Friday services of reflection to lively Crib Services on Christmas Eve. The church is always well attended at 'festival' services and on Remembrance Sunday our choir leads the sung worship at the Civic Remembrance Service in Christchurch Park, which immediately adjoins the church.

*“Small acts, when multiplied by millions
of people, can transform the world”*

Howard Zinn

Mission

Mission is at the heart of what we do. We seek to strengthen and extend this aspect by grasping more fully the missional opportunities at St. Margaret's, which include:

- The presence of our church building close to Ipswich town centre and adjacent to Christchurch Park. Many people pass the church or pause in the churchyard daily. This is a wonderful missional opportunity and is one we could make more of.
- Our support of St Margaret's CEVAP school in numerous ways from prayer, church services and in-school visits, to the provision of venues for school-related activities.
- The Ipswich Garden Suburb, where construction work is now underway on land immediately to the north of Ipswich (partly in our parish), to eventually provide 3,500 houses, a country park, schools and community facilities. We are seeking God's guidance as to how we can, collectively, be salt and light to the thousands of people who will become part of this new community.
- The diverse community within our parish and the many needs that exist across all demographics, where we can offer both practical and spiritual support.
- Monthly meetings of our strong Mother's Union of 20 members, where many elderly members are supported.
- We currently run two homegroups. One weekly and one fortnightly.
- Exploring further mission opportunities via our mission working group.



- Our involvement with care homes in the parish, including taking the Inspiring Ipswich, “Messy Vintage” initiative into several care homes in the parish (which is effectively Messy Church for the elderly).
- Our Toddler group which draws in parents from across the local community, has a weekly attendance of approx. 25 children. This is proving to be a wonderful mission opportunity as some members are also joining us in church now.
- Our pastoral care team who support those in need in our parish and those in our prayer chain who respond daily to prayer requests through our website both locally and worldwide.
- Our involvement in overseas mission, supporting mission partners in Bangalore via CMS; Zambia via Mission Direct and mission activities in the UK via CYM [About CYM](#)

Our Leadership Team

Our leadership team and small number of paid staff at St Margaret's comprises:

- Our two churchwardens, Phil Hall and Margaret Woodward.
- Our Licensed Evangelist, Helen Prior Townsend, who is the focal point for instigating and coordinating missional activities from St Margaret's. Helen has also recently taken on the primary responsibility for leading the 09:30 Rise & Shine service for all ages, with a small team of people assisting her.
- Our PCC of 17 members, with some new faces coming onto it at the 2022 APCM bringing fresh perspectives and energy to the work of the church council. A recent away-day, led by a representative of our patrons, the Simeon's Trustees, was both positive and uplifting, helping us to refocus our thinking in terms of the direction in which God is leading St Margaret's. We are aware that there are gaps in our team and gaps in our mission and are praying that people will come forward to fill these.
- Our paid, part-time verger and church administrator, Andy Turpin, prepares the church for services and assists in the smooth running of services. He also manages relationships with contractors, suppliers and service providers; deals with general enquiries and external contacts; carries out practical arrangements for weekly school services within the church and completes varied administrative functions as and when needed, including production of weekly mailings and rota management.
- Our paid, part-time Director of Music, Christopher Tinker, whose focus is on organ and choral music.

We also have willing volunteers who provide after-service refreshments, sides-person duties and help with keeping the church and churchyard clean and tidy.



St Margaret's Church of England Primary School



Our linked Primary School is, quite literally, across the road from the church and has 420 children on its roll and approximately 65 teaching and ancillary staff. It is regularly placed in the top 20 primary schools in Suffolk for academic results and provides high quality education in a context of Christian values. The school serves the parish of St Margaret's and wider afield and has a rich and diverse culture with over 30 languages spoken. 51% have a non-English ethnicity and 21% are supported by the Pupil Premium.

The school vision of 'transforming lives by living and learning together in God's love' is lived out each day and is shown in action and through prayer by the staff, both for individual pupils and their families. The school has recently employed a part-time chaplain to join the pastoral team, she co-ordinates prayer spaces and, alongside the Headteacher, will assist with worship, planning and linking prayer activities in church. The Headteacher is a committed Christian who worships locally and is a Lay Canon in St Edmundsbury Cathedral. She is also training for Ordination. Most Foundation Governors at St Margaret's CEVAP school are regular church attenders providing another interface between church and school, The church is keen to develop closer links with the school so that we can better understand the challenges faced by many pupils of the school and their families and support them.

The St. Margaret's incumbent automatically becomes an ex-officio Governor of the school (and, in the past, has often been Chair of the governing body). The PCC regards developing closer links between church and school as a key element of the role of our new priest in charge.



What our Parish is like

A casual walk around the parish of St Margaret's would suggest a green and prosperous place. It would discover two large green civic spaces - the impressive Christchurch Park and arboretum including the Tudor landmark and civic museum, Christchurch Mansion, and two older municipal cemeteries and crematorium situated in the north-east of the Parish. Former farmed arable land occupies the northern reaches of the Parish. This will be developed to provide homes for around 1000 families, as part of a wider development of 3500 homes built across three Parishes and collectively termed "The Ipswich Garden Suburb."

The current report of the Church of England Urban Fund reports the Parish population to be 8009 and ranks it as 5627 out of 12382 in terms of overall deprivation. 57% in the 2011 census described themselves as Christian and 30% with no religion. 90% reported white ethnicity, 5% Asian and 2% black. 36% of people lived alone and 21% in lone parent families. It states that 7% of working-aged people, 11% of children and 11% of pensioners are living in poverty. St. Margaret's is far from a single uniform community and these statistics miss the key character of the Parish which is its marked diversity. Demographics drawn from the Suffolk Observatory using mixed data sources over the last ten years, broadly represent the characteristics of the Parish's residents.

- In the north and west live people with above average educational achievement and economic security in predominantly owner-occupier households.
- In the south of the Parish, abutting the town centre and adjacent to the Church, there are areas of major inner-urban deprivation in predominantly private rental accommodation in older terraced housing. This includes some houses of multiple occupancy and a relatively small amount of dispersed social housing. People living in this area are culturally and linguistically diverse and lack the educational and economic security present in the north of the Parish. There is a significant Romany community.



3

St Margaret's Parish



Local Places of Interest approx mileage

Constable Country	9 miles
Felixstowe	12 miles
Lavenham	15 miles
Aldeburgh & Snape	19 miles
Bury St Edmunds	22 miles
Ely	45 miles

Cities (and via mainline rail service)

Colchester.....	16 miles	(20 minutes)
London	80 miles	(65 minutes)
Cambridge	55 miles	(80 minutes)
Norwich	45 miles	(35 minutes)

Airports

London Stansted.....	40 miles
London Southend	39 miles
Norwich	42 miles

Primary Schools

St Margaret's CEVAP	0.7 miles
Ipswich (independent) (+nursery)	1 mile
St Helen's (+nursery)	1 mile
Dale Hall Lane	1 mile
Sidegate Lane	1.5 miles
St Johns CEVAP	2 miles
St Joseph's (independent) (+nursery)	3 miles

High Schools

Northgate (+6th form)	1.5 miles
St Alban's Catholic (+6th form)	2.3 miles
Westbourne Academy	2.5 miles
Ormiston Endeavour Academy	2 miles
Ipswich School (independent)	1 mile
St Joseph's (independent)	3 miles

Colleges & Higher Education

Suffolk New College	1.3 miles
Suffolk One 6th Form College	0.4 miles
Otley College	7 miles
University of Suffolk.....	1.6 miles
University of Essex	20 miles
University of East Anglia	47 miles

Church Building

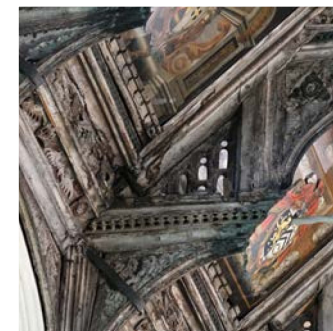
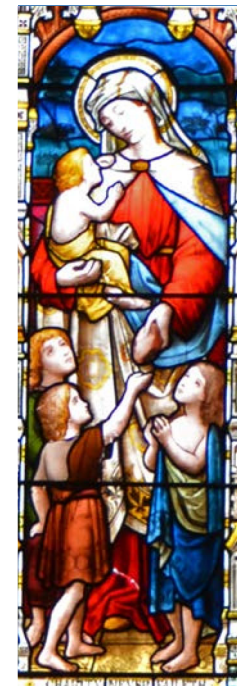
St. Margaret's Church stands invitingly on the edge of Ipswich town centre and next to Christchurch Park ready to greet all who step through its door. It is a superb Grade 1 listed building, parts of which date from the 12th Century and it has a stunning, double hammerbeam nave roof (with ceiling paintings and over 120 carvings) which was expertly cleaned and restored in 1994. Bringing the building up to the present day, a kitchen and toilets were added in 2006 and a new bellringing gallery was constructed in 2018 and the bells restored and re-hung. A new, energy efficient, lighting scheme has recently been completed and upgrade works to our audio-visual provision will shortly be undertaken as well as accessibility improvements both inside and outside the church building. The last quinquennial inspection reported that some work needs to be done to the fabric of the building which has been discussed by the PCC and a plan to rectify the issues is in place.

Our churchyard is "closed" for burials although still has active areas for internment of ashes. The grass is cut by the local council but regular churchyard working parties (with cake!) maintain the planting and paths. Occasional acts of worship are held in the churchyard - weather permitting! - including 'Green Church' services.

Ample parking facilities for services are provided in the school playground just across the road from the church, by way of an informal arrangement we have involving the school's use of the Church Centre premises and our use of the playground for parking.

*Be still for the power of the Lord is moving in this place, He comes to cleanse and heal
to minister His grace No work too hard for Him, in faith receive from Him
Be still for the power of the Lord is moving in this place*

David J Evans



The Church Centre and its users

Our 'church hall', the St Margaret's Church Centre, is situated directly opposite the church and immediately next door to the school and is a great asset/facility and, indeed, mission opportunity. It was substantially refurbished and extended in 1996 and comprises a large hall with stage, comfortable lounge and well-equipped kitchen, plus six meeting rooms of various sizes. Church groups, such as Mothers' Union and our men's breakfast group, use the centre on a regular basis and it has been the venue for several all-church gatherings and celebrations over the years. For a while (pre-COVID) we hosted a monthly "Café Church" which will be reinstated during October.

There are also several community groups that use the Church Centre on a regular basis as their primary premises, including uniform groups (the 26th St Margaret's Scouting Group and Guiding Groups); Alcoholics Anonymous groups; and a company providing out-of-school childcare (breakfast and after school clubs), all of which have semi-permanently allocated facilities within the building.

The facilities are also available for one-off bookings such as children's birthday parties and other celebrations.

The church's primary vision for the Centre is for it to be a resource for both the church and the local community, with a secondary aim of trying to ensure income from the various users covers the church's expenditure on the premises. This has successfully been achieved over recent years, thanks to a small group of dedicated volunteers from the church who manage it but we would welcome further ideas on ways to maximise the Centre's potential.



St Margaret's
Church Centre

St Margaret's
Church

St Margaret's
CoE Primary

4 Buildings and Finance



Mothers' UNION
Christian care for families
"Our membership is open to all women and visitors are always welcome to join us."
(Mothers Union Member)

"We are a totally informal group open to all men of the parish"
(Men's Breakfast Club)



"The meetings are essential for our continuing recovery and wellbeing"
(AA)



"We provide a fun and safe environment for children before and after school"
(Alpha & SMASH Club)



"A great way to meet with other mums. Warm and welcoming"
(Toddler Group Mum)

The Vicarage

St Margaret's vicarage is situated in the highly sought-after location of Constable Road, just a five-minute walk from the church & school and even closer to Christchurch Park, it is also in the catchment area of the popular Northgate High School.

The house is detached and consists of entrance hall, living room, dining room, kitchen, study and cloakroom downstairs. Upstairs there are four bedrooms and a family bathroom. Outside is a driveway with parking for 3 cars and separate garage together with a good-sized rear garden. The house is due for some modernisation and redecoration which will be carried out in time for the arrival of our new priest in charge.



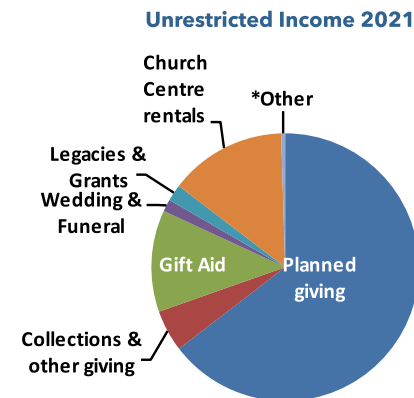
Our Finances

We thank God that our church finances have remained reasonably healthy, despite the recent pandemic. St Margaret's income predominantly comes from regular giving and rental income from our Church Centre. Over the years, we have been blessed with a church membership that has been faithful in giving and we continue to pray for its generosity into the future. Although we have seen our congregation numbers diminish over recent years, regular giving has remained reasonably stable and we have always paid the full Parish Share sum requested of us by the diocese (under its 'Centenary Share' formula) and on a number of occasions we have paid more than that amount to assist churches in the Ipswich Deanery which aren't in such a fortunate financial position.

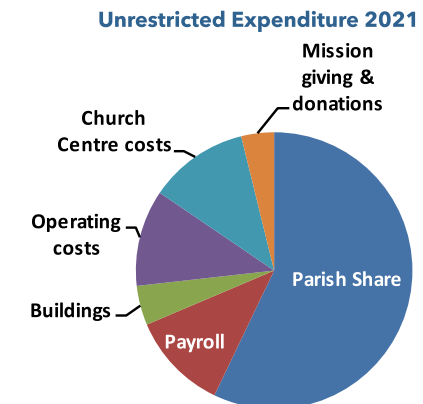
We use the Parish Giving Scheme and have various other ways to give including contactless giving. Notwithstanding our present position, we have to recognise the inflationary pressures we will be facing re increasing utility costs etc. and the need to encourage increased giving, going forward.

We have received some very generous bequests over the years and are currently using those funds to (1) improve accessibility within and around the church, upgrading our lighting and audio/visual provision (2) potentially fund a part time youth worker to operate alongside the school's new chaplaincy appointment and (3) meet the costs of 'necessary' work to the church building as recommended in our 2019 quinquennial report.

We are seeking a Treasurer to the PCC - this role is currently filled by one of the Churchwardens.



Unrestricted Income 2021	
Planned giving	£81,190
Collections & other giving	£6,329
Gift Aid	£15,454
Wedding & Funeral	£1,854
Legacies & Grants	£2,521
Church Centre rentals	£17,774
*Other	£611
TOTAL	£125,733



Unrestricted Expenditure 2021	
Parish Share	£71,566
Payroll	£14,411
Buildings	£5,786
Operating costs	£14,132
Church Centre costs	£14,619
Mission giving & donations	£4,800
TOTAL	£125,314

*... "If you have two shirts, give one to the poor.
If you have food, share it with those who are hungry"*

Luke 3:11

5 Who we seek to come alongside us

Where we feel God is leading us

We are praying for guidance on this journey so that, with the support and leadership of a new priest in charge, we can build up our church congregation for mission and engage more with our local community, for which there is a growing energy and enthusiasm within our PCC. We seek to adopt the Diocesan 'Growing in God' vision of:

*"Belonging to St Margaret's
gives me a Faith boost"*
Church Survey

Growing in Depth



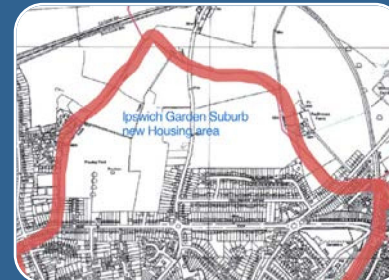
Continue to deliver and strengthen biblical teaching, to provide a firm foundation for both those who are new to Christianity as well as others who are further along their faith journey. Create opportunities for people to explore their faith in a way that's relevant to them. Strengthen the sense of "family" within the church, not only in our knowledge and love of God, but also by way of our love and care for one another and those in our community.

Growing in Number



There is a great opportunity in our church to grow in number by using our multiple connections into our diverse community. Our Licensed Evangelist and others have many missional ideas and would love to start some new initiatives, including extending litter picks and establishing a well-being café.

Growing in Influence



As a church we need to know more about our local community and its needs and how best to serve them. We also aspire to reach beyond ourselves to collaborate with other churches, particularly with regard to the new Ipswich Garden Suburb, and across the Deanery (and beyond).

Growing Younger



Our 9.30 Rise and Shine service has helped us to grow younger but there is more that we can do. We want to strengthen our links with our local primary school and toddler group, work closely with the newly appointed Chaplain at the school; and become involved in 'Inspiring Ipswich' led youth initiatives.

Who we are looking for

Qualities we are looking for

We are praying for a priest who will come alongside the church membership to help us to discern God's direction for St Margaret's and to establish a shared ministry, involving the entire church family:

Someone:

- with a strong, open faith who will give us clear biblical teaching.
- with a heart to make disciples within our diverse community, willing to make connections with communities across our parish and able to communicate inside and outside the church.
- who is a good listener and who can provide pastoral care.
- who will help us to play a stronger part in the life of our deanery and town.
- with enthusiasm, energy and empathy.
- who can support young people and families and encourage them to be part of our church.
- with a willingness to build on and develop links with our much-loved school.
- who is an enabler who can encourage vocation and leadership and embolden others to contribute their God-given gifts.
- who is approachable and has humility.
- who will help our church family to grow in spiritual depth.
in number and in influence within our community and further afield.



Words taken from Church Survey

Who we are looking for

What we can offer you

- We will 'pray without ceasing' for our new priest's ministry to St Margaret's and how we can do 'shared ministry' together.
- Our PCC is committed to the principles of the Inspiring Ipswich and Diocesan Growing in God initiatives.
- We are fortunate to be part of an energetic and supportive deanery, with many active, collaborative projects.
- Our church and church centre both already provide accommodation and an environment that makes mission possible.
- We have a Licensed Evangelist who has a hunger to grow other ministry and has many 'moving forward' ideas.
- Two members of our PCC have recently completed a Growing Leaders course run by 'Inspiring Ipswich' and others have expressed an interest.
- We have long-standing pastoral care and prayer teams, with prayer initiatives each year as well as an established prayer chain.

"Therefore encourage one another and build one another up, just as you are doing"

1 Thessalonians 5:11



St. Margaret's Interior



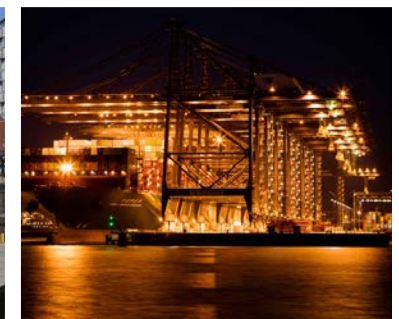


The Diocese

The diocese covers the county of Suffolk, excluding the area around Lowestoft in the north-east, and one parish in Essex. It is a mainly rural diocese with a large number of small villages, plus market towns including Woodbridge, Halesworth, Sudbury and Beccles and the cathedral town of Bury St. Edmunds with its historic ruins of the old Abbey.

Where are we?

Ipswich is the county town with a population of about 147,000. The county embraces historic places of interest such as Sutton Hoo, culture at Snape with the famous annual Aldeburgh music festival, is on the Heritage coast and is a haven for lovers of natural history and birdlife. The busy port of Felixstowe is at the end of the A14 which runs via Cambridge to the Midlands and the A12 which gives access to London and the Norfolk Broads.



6

Diocese and Deanery



THE CHURCH OF ENGLAND
Diocese of St Edmundsbury and Ipswich

We are often known as 'the Church of England in Suffolk'.

The diocesan bishop is the Right Reverend Martin Seeley, and the suffragan bishop is the Right Reverend Dr Mike Harrison. Both work from the Bishop's House in Ipswich. They work together closely to help us shape our vision and strategy, and amongst a plethora of other tasks offer regular teaching mornings to nurture the faith of people in our congregations - and a regular Vlog which can be found on Facebook.

Who are we?

There are 3 archdeaconries and over 450 churches where visitors will find a wide range of worshipping styles, from the traditional to contemporary, as well as fresh expressions and growing numbers of 'Lightwave' groups for those who haven't connected with traditional church previously. We also work closely with our 88 Church of England primary schools. All this is, of course, supported by a small and committed diocesan staff based in the diocesan office in Ipswich.





What is our vision?

Our diocesan vision is to be 'Growing in God', aiming to grow 'flourishing congregations making a difference'. This vision was accepted by Diocesan Synod in 2014 and since then we have been focusing on four key priorities:

- **Growing in Depth:** responding to the call of Christ in every part of our lives
- **Growing in Number:** drawing the contacts we have into the life of God's kingdom
- **Growing in Influence:** reaching beyond ourselves in our impact on the wider world
- **Growing Younger;** building churches whose age-range reflects our communities

Parishes are encouraged to use a simple Mission Action Planning tool to help us all to focus on these priorities and how they might be worked out in each different context. We are trusting God that this vision, underpinned by a commitment to Christian stewardship, will bear fruit as we look to the future.

As part of this vision, in 2019 we received Strategic Development Funding for two major projects: Inspiring Ipswich, overseen by the Archdeacon of Ipswich which aims to grow the church in Ipswich through church planting and reaching out to those who live in the town, and 'Growing God in the Countryside', overseen by the Archdeacon for Rural Mission, which focusses on developing Rural Resourcing Churches and nurturing and discipling new Christians through small Lightwave groups. In 2022 we received further funding (Strategic Transitional Funding) to help embed our Growing in God vision.

We have also been part of a pilot scheme exploring how we can use our church buildings more creatively both for those who worship regularly and for the benefit of our communities and many churches have benefitted from this.

We are broadening our vision through a growing partnership with the diocese of Kagera in Tanzania, with fruitful visits and links being established.

So, in summary:

As our Growing in God vision states, we aspire to be people who know that 'God is with us, gathering us as Christ-centered communities, calling us to make Christian disciples, sending us in loving service, empowering us by the Holy Spirit'.



The apostles said to the Lord, "Increase our faith!"

He replied, "If you have faith as small as a mustard seed, you can say to this mulberry tree, 'Be uprooted and planted in the sea,' and it will obey you

Luke 17: 5-6:

Inspiring Ipswich

Inspiring Ipswich is an imaginative and exciting initiative of the Diocese of St. Edmundsbury and Ipswich. It spans seven years from early 2019 to early 2026 and during this period it seeks to strengthen the existing 24 churches within the deanery of Ipswich, helping them 'to communicate good news and make new disciples', as well as adding 25 new worshipping communities into the mix. Front and central is the overall aim of praying for and nurturing the faith of 1500 new Christians across the town.

With the help of a substantial and unprecedented grant from the Church Commissioners, and a small central Inspiring Ipswich team the project has helped most parishes in the deanery to have a Mission Accompanier to energise a local learning community. Central courses such as 'Leading your Church into Growth', 'Mission-Shaped Ministry', Evangelist training, Alpha training and the 'Growing Leaders' course are part of the offer and the support of two full-time Deanery Pioneer Developers is available for those leading fresh expressions of Church. The Deanery aims in everything to be 'relational, pastoral, missional and inspirational' and aspires to offer a good welcome and ongoing support to all its clergy, primarily through its Deanery Leadership Team, its Deanery Chaplains, clergy chapter meetings, monthly 'Missional Leaders' Lunches' and through the Archdeacon's ministry, which is focused solely on this one area. The Deanery is also highly

imaginative and has recently started an 'Inspiring Angels' project and an 'Inspiring Chaplains' project (the latter headed up by the Headteacher of St Margaret's school.)

One of the primary goals of Inspiring Ipswich is to help at least 5% of the population (around 7,500 people) enjoy an opportunity to explore faith, and our prayer is to offer Alpha or an equivalent course to over 1000 people.

Inspiring Ipswich is also helping congregations to set up new worshipping communities, such as Green Church, Wellbeing churches, Messy Church and a number of church plants such as River Church and Bridge Church.

It is an exciting and friendly deanery to be in. In short, we believe that any prospective priest in charge at St Margaret's would not only find

themselves warmly welcomed within the church and parish but would also find themselves at the heart of an inspiring vision and team in the deanery.

